

*Source for Quality*  
**BULL SALE**  
*& Females*

- BALDIES**
- BLACK/RED SIMMENTALS**
- SIM/ANGUS**
- BLACK/RED ANGUS**
- HEREFORDS**
- SHORTHORN**



**MARCH 8, 2025** **2 PM**  
At the farm, Indian River, ON  
1856 Villiers Line, Indian River, ON

**D | L | M | S**  
Direct Livestock Marketing Systems

*Source for Quality*

# BULL SALE

*and Females*

**March 8, 2025 at 2pm**

**Indian River, ON**

**"NEW LOCATION"**

**D L M S**  
www.dlms.ca

## AUCTIONEER

CARL WRIGHT

519-369-7489

## SALES STAFF

JIM MURRAY

905-955-1779

JAMIE O'SHEA

519-477-1238

CHRIS LODGE (BILINGUAL)

819-574-4200

DENNIS MCFADDEN

705-741-6838

BILLY ELMHIRST

705-761-0896

JUANITA ELMHIRST

705-772-2697

OWEN ELMHIRST

705-772-7717

KATIE ELMHIRST

705-761-9444

JORDAN WALSH

705-927-2032

SHELDON WALSH

705-927-2033

## SCHEDULE

VIEWING & REFRESHMENTS

11AM

LUNCH

12:30PM

SALE TIME

2PM

## FREE BOARDING

Elmhirsts will keep your bull free of charge till May 1st.

## GPS ADDRESS

1856 Villiers Line, Indian River, ON

## TRUCKING

FREE LOCAL TRUCKING

HS KNILLS

519-442-3106

TAYLOR VALLIQUETTE

905-717-2639

## BULLS

The bulls have been semen tested and have been developed on a ration by Masterfeed that will help ensure a strong healthy bull ready to work.

## TERMS

All bulls and females sell and are guaranteed to the regulations of their respective breed associations. Sale attendees do so at their own risk.



Check us out on Facebook:  
Indian River Cattle Company or  
Elmlodge Polled Herefords



Check out the **videos** by  
scanning the qr code or  
go to:

[https://vimeo.com/show-  
case/11580110](https://vimeo.com/show-case/11580110)

*Elmhirst genetics add value!*



Welcome

WOWZERS these are GOOD TIMES!!!!!! Man this cow business is fun to be a part of and we are grateful to be able spend our lives doing what we love (most days) and now more than ever the rewards of cow calf production are at record levels. We are committed as a family to this business and with Owen home on the farm, have ramped up the cowherd numbers to 215 mother cows that now includes a small but growing commercial group of Owens. Cows are all we know and on that note, cows are what pay the bills, and even afford us after 175 years in the old barn to put up this new facility to allow a little more efficient handling and care taking. You can bet to ensure our cows are profitable we scrutinize each individual in the herd for the basic fundamental and practical traits to make sure they can pay their way. With that as our guide we can pass those value added characteristics onto you as commercial or purebred breeders in the form of a new herd bull or first class female. This year's offering is as diverse as ever and even includes a Shorthorn. The bulls of all breeds are some of the best ever with a focus on calving ease but also with enough performance to push down the scales at what we think are practical levels with practical management. This year there are many special opportunities, with the first Kabooms on offer, his full brother sells, a FOXTROT son sells that will be part of a monumental production year for that cow, more Angus bulls sell with an incredible fall born leading the way, Head Honcho progeny will blow you away in the Hereford section as well, "White Lightning" who will hunt for glory and the smokin hot baldy Simmental heifer Miriachi will do the same. The Walsh Family bring a pair of excellent bulls to represent there progressive program. They are making waves with top genetics and top selling stocker calves to prove it. There has never been a better time to invest in a new herd sire or breeding tool to capitalize on this awesome market and this offering has that added value bred in to do just that.

If we can assist you with any of your plans to participate in Source for Quality on March 8, feel free to contact any of the Elmhirst family or log on with DLMS to be part of the action.

*The Elmhirsts*

(Winter's relentless onslaught of snow and weather have kept us extra busy so you'll notice some bulls aren't as clean as we would have liked, but they aren't pampered or over fed so they can continue to thrive in any condition)

**NEW LOCATION**

We are moving over to the main farm at 1856 Villiers Line, the original Elmhirst homestead over 200 years ago. That is where the bulls are wintered and the yard is bigger and friendlier for parking and access. The entrance way is just north of the house driveway.

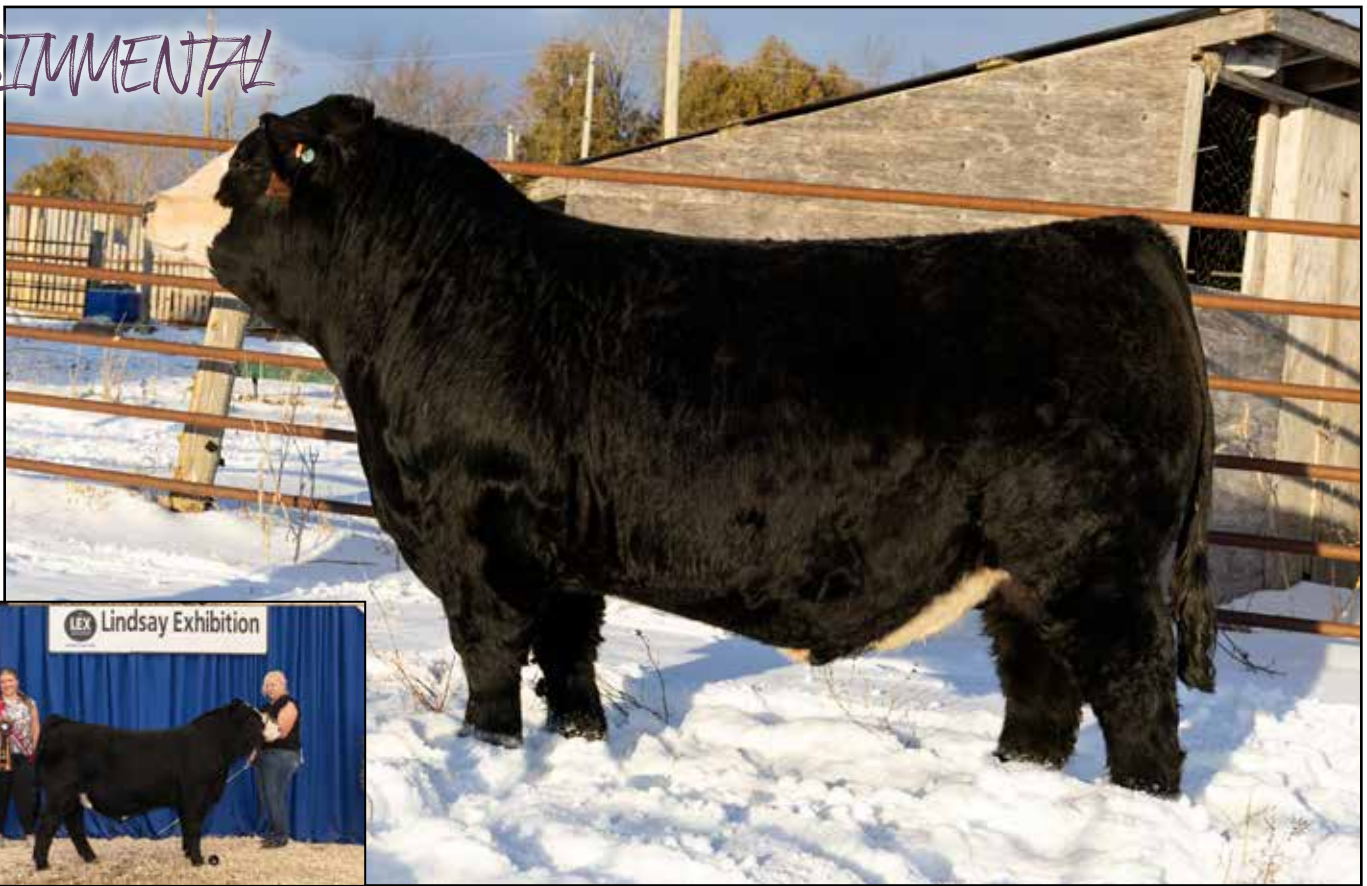


**ONLINE BIDDING**

Online bidding has become a large part of the auction industry and if you need assistance contact Emily or ourselves to get you set up. To bid online, please sign up before the sale.  
Emily Gibson-MacTavish 519-440-9907  
Mark Shologan: 780-699-5082



SIMMENTAL



Lindsay Fair Champion

- Revolutionary herd bull
- Extra everything: Body, shape, quality, presence
- Dominated the 2024 show circuit in Central Ontario
- Full brother to Hot Tomale (dam of Kaboom)
- Big data, top maternal
- The Boomshakalaka son to replace his legendary sire
- Sound, square running gear
- Unparalleled heart, rib and flank in a purebred Simmental bull

Lot 409M IRCC HAWK TUAH 409M

MR HOC BROKER  
**S: IRCC BOOMSHAKALAKA 434B**  
 IRCC XCELLA 2X  
 WS STEPPING STONE B44  
**D: IRCC FLYING COLOURS 805F**  
 IRCC WAT-CHA 942W

05 January 2024  
 1475152  
 TOPS 409M  
 Heterozygous Polled  
 Homo Black

BW	ADJ WW	ADJ YW	SALE WT	CE	BW	WW	YW	MM	TM	API
86	767	1468		10.4	2.1	87.9	127.3	35.4	79.4	111.76



IRCC HOT TOMALE 25H - Full sister to Hawk Tuah and \$31,000 dam of Kaboom



Full brother to 409M sold to Cassview Farms as last year's high seller. 2023 Fall Finale Supreme Champion Bull

**5 Semen packs sell/Interest Sells**

We are super excited to share this bull with the industry and will offer semen packs of 10 straws or more to interested parties and plan to have it directly after the sale. Contact us for more details.



# SIMMENTAL

- Bonafide heifer safe, calving ease prospect
- Out of a nice uddered 2 year old heifer
- One of the first Kabooms
- Extra muscle and punch
- Huge indexes for All Purpose and terminal

**Lot 404M IRCC MARNER 404M**

MR SR 71 RIGHT NOW E1538  
**S: IRCC DOUBLE BAR D KABOOM 205K**  
 IRCC HOT TAMALE 25H  
 NGDB STRUCTURE 34D  
**D: CF RPCC BLK KOWGIRL 253K**  
 RPCC BLK FIRE FLY 232F

02 January 2024  
 1491936  
 TOPS 404M  
 Homozygous Polled  
 Heterozygous Black



DAM PICTURED AS A CALF

BW	ADJ WW	ADJ YW	SALE WT	CE	BW	WW	YW	MM	TM	API
78	714	1296		8.1	1.9	91.4	1370	25.2	70.9	121.99



# SIMMENTAL

- Only red on offer and a standout
- Big time performance
- Soft, easy doing, easy going
- Excellent choice for white heifers
- Good calving ease numbers

**Lot 407M IRCC MOCHA 407M**

LFE STRATTON 3094F  
**S: LRX STERLING 46J**  
 LRX BLACK 29D  
 GSC ALL IN 72A  
**D: RPCC BLK ELLA 253E**  
 IRCC CINNAMON 542C

03 January 2024  
 1476430  
 TOPS 407M  
 Heterozygous Polled  
 Red  
 TWIN



XXXXXX

BW	ADJ WW	ADJ YW	SALE WT	CE	BW	WW	YW	MM	TM	API
70	693	1371		12.0	3.3	70.2	1072	20.6	55.7	113.39

# SIMMENTAL



Lot 412M IRCC MATHEWS 412M

W/C DOUBLE DOWN 5014E

S: WHF/JS/CCS DOUBLE UP G365

WHF SUMMER 365C

LLSF PAYS TO BELIEVE ZU194

D: IRCC P2B KEIRA 225K

IRCC ZIMMER ET 202Z

BW	ADJ WW	ADJ YW	SALE WT	CE	BW	WW	YW	MM	TM	API
84	718	1163		9.5	3.3	89.8	122.4	22.9	67.8	106

07 January 2024

1491938

TOPS 412M

Homozygous Polled

Heterozygous Black

- 84lb calving ease bull
- Out of a first calver
- Should improve udder quality
- Top proven AI genetics
- Halter broke

# SIMMENTAL



Lot 419M IRCC DBARD MR RIGHT 419M

HOOK'S BOZEMAN 8B

S: MR SR 71 RIGHT NOW E1538

MISS SR C1538

IRCC BOOMSHAKALAKA 434B

D: IRCC HOT TAMALES 25H

IRCC FLYING COLOURS 805F

02 February 2024

1475666

TOPS 419M

Homozygous Polled

Heterozygous Black

- Special full brother to the \$29000 high selling Kaboom bull now featured at Genex
- Built in marketability as Kaboom semen sales were among the highest in the Genex line up.
- Long, big topped with balance
- Incredible EPD profile
- Gorgeous dam
- Halter broke
- And ONLY a 79 lb BW.

BW	ADJ WW	ADJ YW	SALE WT	CE	BW	WW	YW	MM	TM	API
79	771	1393		12.9	-0.7	87	132.9	31.8	75.3	130



# SIMMENTAL

- Standout bull at weaning
- Dam is consistent high end producer
- Chrome to add value
- High growth WW and YW
- Paternal brother sold to Campbells in Renfrew last year



Business end of 417M

## Lot 417M IRCC MAJOR LEAGUE 417M

NGDB STRUCTURE 34D  
**S: BLACK GOLD COLISEUM 140H**  
 RF CERTAINLY FLIRTIN 532C  
 IRCC THE BOMB 403B  
**D: IRCC DAPPLE 621D**  
 IRCC ASK ME OUT 312A

14 January 2024  
 1476424  
 TOPS 417M  
 Homozygous Polled  
 Heterozygous Black

BW	ADJ WW	ADJ YW	SALE WT	CE	BW	WW	YW	MM	TM	API
94	723	1365		4.7	6.8	90.0	135	17.3	17.3	105



# SIMMENTAL

- Purebred breeder bull alert
- \$210000 elite sire
- ET out of the sensational Foxtrot
- Siblings exploding across the industry last fall and this bull sale season including a \$35000 sister at FNL, Champion Bull at Lloydminister, sale features at Black Gold, Walgren and Rainbow River
- Stout, hairy, high performing
- Unmatched EPDs with top 5% indexes for API and TI.
- Low BW and top CE
- Be part of the Foxtrot revolution.
- IRCC will retain semen interest

## Lot 421M IRCC MUFASA ET 421M

ES RIGHT TIME FA110-4  
**S: KCC1 COUNTERTIME 872H**  
 KCC1 HAVANA 83E  
 IRCC BOOMSHAKALAKA 434B  
**D: IRCC FOX TROT 862F**  
 IRCC DANCING QUEEN 607D

15 January 2024  
 1498760  
 TOPS 421M  
 Homozygous Polled  
 Homozygous Black

BW	WW	YW	SALE WT	CE	BW	WW	YW	MM	TM	API
82	700	1350		12.8	1.5	85.1	129	22.8	65.4	132



FOXTROT



# SIMMENTAL

Lot 426M IRCC METEOR 426M

17 January 2024  
1476429  
TOPS 426M  
Homozygous Polled  
Homo Black

- Well rounded herdbull
- Breed leading CE and BW
- Heavy milking dam
- Heifer pen friendly

W/C BANKROLL 811D  
S: IRCC DLC KING GEORGE 905G  
IRCC DEBUTANTE 634D  
STF KILLER JOE ZT80  
D: WISERS XOTIC DIAMOND 206D  
ROBSON ACRES XOTICA

BW	ADJ WW	ADJ YW	SALE WT	CE	BW	WW	YW	MM	TM	API
84	648	1109		15.3	-0.3	72.0	102	24.3	60.3	119



# SIMMENTAL

Lot 449M IRCC CLYD MICHELOB 449M

04 February 2024  
1476440  
TOPS 449M  
Homozygous Polled  
Homo Black

- Baldy calving ease bull
- High maternal
- Top 1% in breed for CE & BW
- Sister is a top cow at IRCC

W/C BANKROLL 811D  
S: IRCC DLC KING GEORGE 905G  
IRCC DEBUTANTE 634D  
WS STEPPING STONE B44  
D: IRCC SS EXCELLENCE 710E  
DEEG MS CARMEN 131C

BW	ADJ WW	ADJ YW	SALE WT	CE	BW	WW	YW	MM	TM	API
70	658	1124		16.2	-1.7	78	113	27.3	66	129



# SIMMENTAL

Lot 465M IRCC MAHOMES 465M

28 February 2024  
1491459  
TOPS 465M  
POLLED  
BLACK

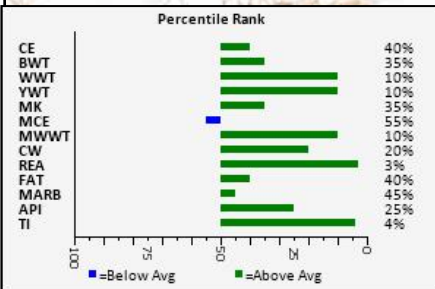
- Younger born Kaboom son
- Milky dam
- Hard muscled
- Extra hair
- Great numbers and indexes

MR SR 71 RIGHT NOW E1538  
S: IRCC DOUBLE BAR D KABOOM 205K  
IRCC HOT TAMALES 25H  
SFI LOAD CELL E2  
D: IRCC GLITTER 944G  
IRCC ETERNITY 756E

BW	ADJ WW	ADJ YW	SALE WT	CE	BW	WW	YW	MM	TM	API
78	605	1229		13.7	-0.5	77	116	29	68	129



SIMMENTAL



Lot 468M IRCC MOJO 468M

MR SR 71 RIGHT NOW E1538  
**S: IRCC DOUBLE BAR D KABOOM 205K**  
 IRCC HOT TAMALES 25H  
 CDI TRUSTEE 387F  
**D: RUST MS SUNSET PRIDE 021H**  
 EARLY SUNSET PRIDE 49Y

03 March 2024  
 1479170  
 TOPS 468M  
 HOMO POLLED  
 HOMO BLACK  
 3/4 PERCENTAGE BULL

- Favourite of the 2024 crop
- 3/4 blood for extra vigour
- Gorgeous dam
- Complete built with body and thickness
- The kind we strive to raise
- Proof of Kabooms breeding strength

BW	ADJ WW	ADJ YW	SALE WT	CE	BW	WW	YW	MM	TM	API
94	743	1431		8.9	2.7	95	141	28	76	120



SIMMENTAL

Lot 335L IRCC LUCK 335L

MR HOC BROKER  
**S: IRCC BOOMSHAKALAKA 434B**  
 IRCC XCELLA 2X  
 CDI TRUSTEE 387F  
**D: RUST MS SUNSET PRIDE 021H**  
 EARLY SUNSET PRIDE 49Y

BW	ADJ WW	ADJ YW	SALE WT	CE	BW	WW	YW	MM	TM	API
64	633	1086		9.0	3.4	88	124	29	73	110

- 17 January 2023  
 1462495  
 TOPS 335L  
 POLLED  
 BLACK
- Maternal brother to Mojo
  - Worked at IRCC last spring
  - Proven breeder
  - Fault free structure
  - Extra age to cover more cows
  - Perfect condition to go to work.



# SIMMENTAL

Lot 477M IRCC MATAHARI 477M

W/C BANKROLL 811D  
**S: IRCC DLC KING GEORGE 905G**  
 IRCC DEBUTANTE 634D  
 HART STATE OF WAR 056C  
**D: ERIXON LADY 2F**  
 ERIXON LADY 77D



BW	ADJ WW	ADJ YW	SALE WT	CE	BW	WW	YW	MM	TM	API
78	539			16.4	-0.3	82	118	29	70	126

06 March 2024  
 1476436  
 TOPS 477M  
 POLLED  
 BLACK

Genetic opportunities galore on this fancy baldy heifer out of last lead off Friday Night Lights feature. This heifer will be a 3/4 sister to the \$32000 Jessica heifer that went to Black Gold. With tremendous data in support here is one to build a cow family from.



# SIMMENTAL

Lot 474M IRCC MS MIDDLETON

W/C BANKROLL 811D  
**S: IRCC DLC KING GEORGE 905G**  
 IRCC DEBUTANTE 634D  
 MR ISHEE SUPERSTOUT 014  
**D: IRCC DUCHESS 603D**  
 INDIAN RIVER SWEET HEART

BW	ADJ WW	ADJ YW	SALE WT	CE	BW	WW	YW	MM	TM	API
78	527			13.4	1.2	77	110	27	27	118

03 March 2024  
 1476426  
 TOPS 474M  
 POLLED  
 RED

Beauty patterned red heifer out of black parents. Her dam is a big stout power cow that works hard and her sire adds quality and style. Red Simmentals are hotter than ever and here is a reason why.



# SIMMENTAL

F2Lot 4105M IRCC F2 QUEEN 4105M

W/C BANKROLL 811D  
**S: IRCC DLC KING GEORGE 905G**  
 IRCC DEBUTANTE 634D  
 SPRINGCREEK CASH 132B  
**D: IRCC F1 QUEEN 977G**  
 ANGUS x ANGUS



BW	ADJ WW	ADJ YW	SALE WT	CE	BW	WW	YW	MM	TM	API
71	633			13.9	0.1	74	109	28	65	110

18 May 2024  
 1491937  
 TOPS 4105M  
 POLLED  
 RED

A super exciting 3/4 blood, red heifer that has the same body build and extra quality as her maternal sister that was the 2022 Royal % Calf Champion now at Pethericks. Tracing back to a meat wagon Emblazon Angus cow the possibilities here are endless.

SIMMENTAL



Dam's sister - the impact donor, Foxtrot

Lot 4102M IRCC E2 MARIACHI 4102M

LLSF PAYS TO BELIEVE ZU194  
**S: SFI LOAD CELL E2**  
 SFI MISS STROKE OF LOVE  
 IRCC DLC KING GEORGE 905G  
**D: IRCC JITTERBUG 180J**  
 IRCC DANCING QUEEN 607D

03 May 2024  
 1491469  
 TOPS 4102M  
 POLLED  
 BLACK BLAZE

The LAST daughter of Load Cell to be offered for sale. And what a legacy he has created with show winners, sale toppers and super producers. This one is only on offer for glory seekers, dreamers and progressive breeders to move a program forward. As swoopy bellied and maternal as you can make one with bone, substance and sheer mass. She's just a May and will measure up with any for power and performance. Her dam is a beauty young cow with the same family and top side as the great Foxtrot. Check her name, if they have a catchy name around here it means you best pay attention.

BW	ADJ WW	ADJ YW	SALE WT	CE	BW	WW	YW	MM	TM	API
70	647			15.0	0.7	74.8	111.2	29.4	66.8	126.14



SIMMENTAL

Lot 36H JARVIS HAZAEL 36H

HOOKS SHEAR FORCE 38K  
**S: JARVIS SHEAR FORCE**  
 JARVIS TOM FRESHLADY II  
 IRCC TOMAHAWK 706T  
**D: JARVIS TOM BEAU**  
 JARVIS BEAU HERMINE

BW	ADJ WW	ADJ YW	SALE WT	CE	BW	WW	YW	MM	TM	API
				9.6	3.1	69	97	20	55	110

20 November 2020  
 1398227  
 JSL 36H  
 POLLED  
 BLACK

Rock solid foundation type Simmental 4 year old cow right in her prime. Double bred to one of the great bulls; Tomahawk that we have ever raised. Black with that much sought after chrome on her forehead, she checks the functional boxes for udder, feet, temperament, structure and doability. Her 2023 model sold last year to Coulthards. Should calve by sale time to STF Uprising 700F.



# SIMMENTAL SEMEN

## Lot 434B IRCC BOOMSHAKALAKA

SVF STEEL FORCE S701

**S: MR HOC BROKER**

JM BF H25

GWS EBONY'S TRADEMARK 6N

**D: IRCC XCELLA 2X**

IRCC U GO GIRL 804U

BW	ADJ WW	ADJ YW	SALE WT	CE	BW	WW	YW	MM	TM	API
84	940	1551		10.7	2.2	89	124	32.7	77.2	104.9

02 April 2014  
1119024  
TOPS 434B  
Hetero Polled  
Hetero Black

- SELLING 25 STRAWS in packages of 5 - A to E
- Time tested and proven
- Just gets it done in both sexes
- If you never have, you should
- Still the go to at IRCC



# SIMMENTAL SEMEN

## Lot 905G IRCC DLC KING GEORGE

W/C LOADED UP 1119Y

**S: W/C BANKROLL 811D**

MISS WERNING KP 8543U

IRCC BOOMSHAKALAKA 434B

**D: IRCC DEBUTANTE 634D**

IRCC BOOTY CALL 449B



BW	ADJ WW	ADJ YW	SALE WT	CE	BW	WW	YW	MM	TM	API
83	831			19.1	-1.1	86.1	123.0	32.4	75.4	121.9

06 January 2019  
1278159  
TOPS 905G  
Homozygous Polled  
Hetero Black

- SELLING 25 STRAWS in packages of 5 - A to E
- Siring high sellers and show stoppers
- Daughters in production excel (see 4102M)
- Bonafide calving ease
- Very limited supply



# SIMMENTAL SEMEN

## Lot X623 MR HOC BROKER

CNS DREAM ON L186

**S: SVF STEEL FORCE S701**

SVF SHEZA BEAUTY L901

G&L BLACKFOOT 716D

**D: JM BF H25**

YC MISS BIK B80

BW	WW	YW	SALE WT	CE	BW	WW	YW	MM	TM	API
85	940	1432		5.0	4.3	76.5	107.7	17.8	56.1	82

20 January 2010  
744464  
FGN 623X  
POLLED  
BLACK BLAZE

- SELLING 2 STRAWS
- Stored in farm tank
- No bull has done more for us and many others than this incredible breeding tool
- As popular now as he has ever been
- Rare semen that is commanding huge \$\$\$\$ south of the border



**IRCC DARLIN' 613D**

## SIMMENTAL EMBRYOS

- Not much needs said here
- Dare to dream
- You could have the next breed changer
- Darlin 613D has revolutionized the industry
- Embryos stored at EastGen
- Guaranteed one pregnancy if implanted by certified tech

Lot 44A 3 GRADE A EMBRYOS (FULL SIB TO DARLIN 613D)

SVF STEEL FORCE S701

**S: MR HOC BROKER**

JM BF H25

OLF ODIN U5

**D: DESTINY ODIN SHEA**

DESTINY BUCKEYE SHEA



MR HOC BROKER



## SHORTHORN

- Uniquely bred and built
- Flawless structure
- Strong breeding head
- Lower BW option
- Dam was Fall Finale Res Champion
- Grand dam was Junior National Champion
- Rare opportunity for a commercial or purebred program
- Consigned by Katie Elmhirst, NJM Shorthorns and Wernacres Shorthorns

Lot 403M KT NJM SON OF 49 403M

HC CRUISER 59C

**S: HC NORTH OF 49 55G**

MELBA JEALOUSY 35C

HILL HAVEN FIRE STORM 28C

**D: KT-NJM LITTLE LUCY 403H**

WERNACRES LUCY 704E

03/04/2024

32972

ELLA 403M

POLLED

RED

BW	ADJ WW	ADJ YW	SALE WT	CE	BW	WW	YW	MM	TM	API
81	719	1158		9	1.4	42	59	24	44	-



HC NORTH OF 49 55G

# HEREFORD



## Lot 33M ELM-LODGE MACHO 33M

ELM-LODGE EMPEROR 67E  
**S: ELM-LODGE HEAD HONCHO 56H**  
 ELM-LODGE ZUMBA 3Z  
 UPS SENSATION 2296 ET  
**D: GOBLE ROLLINS MISS SENA 103H**  
 GOBLE MISS TRUST 301B

13/03/2024  
 C03118853  
 TAX 33M  
 POLLED/S

- What we strive to breed
- Heavy muscled, square and cocky
- Proud and upheaded
- Hard to find kinda Hereford dimension
- Halter broke
- Rare 2296 dam in Canada
- By pedigree or tested free of genetic abnormalities

BW	ADJ WW	ADJ YW	SALE WT	CE	BW	WW	YW	MM	TM	API
82	679	1225		1.5	3.2	58.6	96.3	33.6	62.9	-



# HEREFORD

## Lot 8M ELM-LODGE MOUNTIE 8M {DLF HYF IEF MSUDF}

NJW 73S 38W RIDGE 103C ET  
**S: NJW 139C 103C RIDGE 254G**  
 NJW 149Z 88X LEXY 139C ET  
 BOYD 31Z BLUEPRINT 6153  
**D: KH JLCS 6153 GALA C8 H15**  
 KH 10Y GALA C8

BW	ADJ WW	ADJ YW	SALE WT	CE	BW	WW	YW	MM	TM	API
92	686	1114		6.0	3.0	61.7	94.5	39.7	70.6	-

03/01/2024  
 C03114761  
 TAX 8M  
 Homozygous Polled  
 GENETIC DEFECT FREE

- Rugged and red eyed
- Smooth and long
- Very nice dam
- Top NJW genetics here
- Complete

**"NEW LOCATION"**  
**1856 Villiers Line**

HEREFORD



**Lot 56M** ELM-LODGE MAIN MAN 56M {DLF HYF IEF MSUDF DBF}

ELM-LODGE EMPEROR 67E  
**S: ELM-LODGE HEAD HONCHO 56H**  
 ELM-LODGE ZUMBA 3Z  
 RVP 9050 ARCHITECT 46A  
**D: RVP 46A HELOISE 125H**  
 GOBLE MISS GORGEOUS 206F

14/04/2024  
 C03116508  
 TAX 56M  
 Heterozygous Polled

- All the bells and whistles
- Unmatched body and fore rib
- Easy doing
- Big cool goggles
- Dark cherry red
- Nice uddered milky mom
- 3/4 brother to 2023 Royal Grand Champion - Legit
- Purebred breeder type bull free of abnormalities
- Don't forget the awesome 2024 Royal Champion

BW	ADJ WW	ADJ YW	SALE WT	CE	BW	WW	YW	MM	TM	API
84	778	1343		4.3	1.5	46.9	71.5	32.3	55.8	-



HEAD HONCHO

HEREFORD

**Lot 12M** ELM-LODGE MUSKATEER 12M

ELM-LODGE EMPEROR 67E  
**S: ELM-LODGE HEAD HONCHO 56H**  
 ELM-LODGE ZUMBA 3Z  
 NJW 34S 38W BEEF 15Z ET  
**D: SQUARE-D BELLE 137G**  
 MANNLE'S SWEET CAROLINE 137Y

BW	ADJ WW	ADJ YW	SALE WT	CE	BW	WW	YW	MM	TM	API
87	504	966		2.9	2.5	44.1	72.0	30.4	52.5	-

07/01/2024  
 C03114758  
 TAX 12M  
 POLLED

- Excellent young dam
- Top tier udder quality
- Head Honcho length
- Smooth made bull that could work on heifers



# HEREFORD

- Really well balanced and super complete.
- Feminine and attractive
- Maternal pedigree on both sides
- Popular and predictable genetics
- Moderate, some pigment and hard to fault
- Don't forget Thaxter's awesome 2024 Royal Champion was a Blueprint daughter.

**Lot 10M ROSELYN MY GIRL 10M**

R LEADER 6964

**S: BOYD 31Z BLUEPRINT 6153**

NJW 91H 100W RITA 31Z ET

ELM-LODGE PAYCHECK 11P

**D: ELM-LODGE KISS AND TELL 14K**

ELM-LODGE TAY ENDLESS LOVE 60E

20/02/2024

C03118435

DAS 10M

POLLED

BW	ADJ WW	ADJ YW	SALE WT	CE	BW	WW	YW	MM	TM	API
69	570			4.3	2.9	57.2	86.4	27.6	56.2	-



THAXTER CHAMPION by Blueprint



# HEREFORD

- Own daughter of the great Fort Worth Champion
- Dam was a gorgeous show heifer
- Dam was Supreme at Fall Finale
- Same family as 30M
- Balance and look
- Montgomery cows are beauties

**Lot 29M ELM-LODGE KT MAKE BELIEVE 29M**

UPS SENSATION 2296 ET

**S: H MONTGOMERY 7437 ET**

RST GAT NST Y79D LADY 54B ET

ELM-LODGE ENGINEER 31E

**D: ELM-LODGE KT GLASS SLIPPER 36G**

BRENDALE 743 LAUREEN 115C

08/02/2024

C03114762

ELLA 29M

POLLED

BW	ADJ WW	ADJ YW	SALE WT	CE	BW	WW	YW	MM	TM	API
71	530			7.7	1.5	51.1	84.3	33.6	59.2	-



DAM



# HEREFORD



## Lot 30M ELM-LODGE KT WHITE LIGHTENING 30M

KJ BJ 309C LEADER 182F  
**S: KJ TWJ 907E LIBERTY 159H ET**  
 KJ BJ 339A CHARDONNAY 907E ET  
 CRR ABOUT TIME 743  
**D: BRENDAL 743 LAUREEN 115C**  
 OSF LAUREN 58G 113T

08/02/2024  
 APPLIED FOR  
 ELLA 30M  
 POLLED

- Big, big time show prospect
- Extra rib and beautifully wedged
- Clean fronted and good chested
- Extended and flashy
- Katie's awesome family that always produces. Check support pics

BW	ADJ WW	ADJ YW	SALE WT	CE	BW	WW	YW	MM	TM	API
90	670			5.7	1.5	58	94	33	62	-



# HEREFORD EMBRYOS

## Lot 42F 3 GRADE A EMBRYOS

CHURCHILL PILGRIM 632D ET  
**S: H THE PROFIT 8426 ET**  
 RST GAT NST Y79D LADY 54B ET  
 R LEADER 6964  
**D: ELM-LODGE FLIRTIN 42F**  
 GG 743 PERFECT TIMING 105Y

- Unlimited potential
- Dominating show female as a calf, bred and cow
- 2022 Bonanza Champion Female
- Profit daughters have owned the Royal Calf Champion divisions in 2023 & 2024
- Guaranteed one pregnancy if planted by a certified tech



Int Calf Champ 2024 by Profit



Sr Calf Champ 2023 by Profit



Sr Calf Champ 2024 by Profit



# HEREFORD

- Only sells to help pay bills
- Everything you want
- Pigment, tidy udder, square and beefy
- Feminine and attractive
- Fittingly traces to the original Melva cow family that started here 50 years ago.
- Even homo polled for extra value
- Will calve by sale day to Head Honcho.

## Lot 16H ELM-LODGE HIGH FASHION 16H {DLF HYF IEF MSUDF MDC}

NJW 73S W18 HOMETOWN 10Y ET  
**S: NJW 135U 10Y HOMETOWN 27A**  
 NJW 4037 34S DURANGO VACA 135U  
 TH 75J 243R BAILOUT 144U ET  
**D: ELM-LODGE BLOSSOM 26B**  
 ELM-LODGE 41D NECTARINE 57N

01/02/2020  
 C03071439  
 TAX 16H  
 Homozygous Polled



27A

BW	ADJ WW	ADJ YW	SALE WT	CE	BW	WW	YW	MM	TM	API
81				6.9	2.2	52.7	79.2	24.7	51.1	-



# HEREFORD

- Superb first calf heifer
- First wet daughter of the super stud, "Head Honcho"
- Proven productive dam still at it at 13 years
- Attractive and complete
- Sells with a February 6th steer calf, TAX 26N

## Lot 18L ELM-LODGE INSTANT LOVE 18L

ELM-LODGE EMPEROR 67E  
**S: ELM-LODGE HEAD HONCHO 56H**  
 ELM-LODGE ZUMBA 3Z  
 MOHICAN XEROX 404X ET  
**D: MOHICAN WHATAGIRL Z32**  
 SPARKS WHATAGIRL 406W ET

04/02/2023  
 C03103669  
 TAX 18L  
 POLLED



HONCHO

BW	ADJ WW	ADJ YW	SALE WT	CE	BW	WW	YW	MM	TM	API
80				0.6	2.8	48.8	78.6	28.7	53.1	-

ANGUS



Lot 3112L IRCC LANDMAN 3112L

BAR-E-L RESOLUTION 34F  
**S: BAR-E-L ROYAL RESERVE 120H**  
 HF EVENING TINGE 38C  
 JUST ENUFF NEW EDITION EDGAR  
**D: PPS BARB 9B**  
 LOOKOUT RUBY 352N

15 Oct 2023  
 CM561945  
 IRCC 3112L  
 POLLED  
 BLACK

- Meat wagon
- Extra age
- Prolific 11 year old dam
- Easy fleshing
- Highly maternal
- Feature Angus Bull

BW	ADJ WW	ADJ YW	SALE WT	CE	BW	WW	YW	MM	TM	API
85	720	1331		2.5	1.3	43	76	22		



ANGUS

Lot 418M IRCC CAPTAIN MORGAN 418M

BAR-E-L RESOLUTION 34F  
**S: BAR-E-L ROYAL RESERVE 120H**  
 HF EVENING TINGE 38C  
 SYDGEN C C & 7  
**D: BOYD FIRST LADY 2016**  
 BOYD FIRST LADY 867

BW	ADJ WW	ADJ YW	SALE WT	CE	BW	WW	YW	MM	TM	API
88	676	1244			0.6	43	80	25		

14/01/2024  
 2377096  
 14/01/2024  
 POLLED  
 BLACK

- Stout hipped
- Bone, muscle and feature
- Extra frame and length
- Will add pounds
- Stocker steers will explode out of this guy
- Good natured



# ANGUS

- Masculine Angus headed
- Soft made and well balanced
- Gorgeous dam from the famed Coleman Donna family
- Good numbered
- Complete herd bull
- HEIFER BULL alert

Lot 447M IRCC MOLSON 447M

BAR-E-L RESOLUTION 34F  
**S: BAR-E-L ROYAL RESERVE 120H**  
 HF EVENING TINGE 38C  
 CARD ANSWER 76Y  
**D: CARDINAL DONNA 55H**  
 COLEMAN DONNA 5355

04/02/2024  
 2364427  
 IRCC 447M  
 POLLED  
 Black



SISTER

BW	ADJ WW	ADJ YW	SALE WT	CE	BW	WW	YW	MM	TM	API
70	653	1164		8.5	-1.8	47	83	24		



# ANGUS

- Sired by the great Emerald whose semen sells at \$1000 a pop
- Dam is beautiful and milky
- Will make top replacements
- Great genetics
- Square and level

Lot 450M IRCC MORRIE 450M

S A V RENOVATION 6822  
**S: BROOKING EMERALD 9179**  
 BROOKING BEAUTY 6051  
 S A V RAINDANCE 6848  
**D: ECHODALE SHEDAISY 3J**  
 HAWTHORNE SHEDAISY 51A

04/02/2024  
 2377965  
 IRCC 450M  
 POLLED  
 Black



EMERALD

BW	ADJ WW	ADJ YW	SALE WT	CE	BW	WW	YW	MM	TM	API
87	657	1215		1.0	3.3	66	125	24		

ANGUS



Lot 455M IRCC MAGIC 455M

S A V RAINFALL 6846  
**S: SQUARE B ATLANTIS 8060**  
 ELBANNA OF CONANGA 1209  
 KR CASH FLOW  
**D: GF BLACKBIRD 4D**  
 TAMBRI BLACKBIRD 4X

08/02/2024  
 CM572149  
 IRCC 455M  
 POLLED  
 Black

- Extra punch
- Famous sire
- Strong Angus character
- Dam will secure foot structure and milk
- Beefy type

BW	ADJ WW	ADJ YW	SALE WT	CE	BW	WW	YW	MM	TM	API
92	635	1336		1.0	3.5	62	106	33		



ANGUS

Lot 485M IRCC MIGHTY 485M

BROOKING NATIONAL 0144  
**S: BAR-E-L ABSOLUTE 54K**  
 BAR-E-L BRIDE 5H  
 NORFOLK COLONEL 18G  
**D: CLARKE'S BLACKCAP MAY 17K**  
 S A V BLACKCAP MAY 6340

BW	ADJ WW	ADJ YW	SALE WT	CE	BW	WW	YW	MM	TM	API
90	605	1200								

17 Mar 2024  
 APPLIED FOR  
 IRCC 485M  
 POLLED  
 BLACK

- Youngest bull on offer
- Out of a first calf heifer
- Rugged made for his age
- commercial non papered Angus bull

# ANGUS



## Lot 489M IRCC ANNIE K 489M

LD CAPITALIST 316  
**S: KT HEADING WEST 698H**  
 S A V EMBLYNETTE 8824  
 S A V BLOODLINE 9578  
**D: ANCHORAGE ANNIE K 2052**  
 BROOKING ANNIE K 7131

02/04/2024  
 2374390  
 IRCC 489M  
 POLLED  
 Black

- Junior yearling show prospect
- Nice uddered 2 yr old dam
- Long, clean necked and extended
- Famous cow family
- Power of Bloodline behind her

BW	ADJ WW	ADJ YW	SALE WT	CE	BW	WW	YW	MM	TM	API
86				-5.0	4.7	70	125	22		

High Quality Daughters



IRCC 399L



IRCC 103J

# ANGUS

## Lot 41G PFLC MISS MORRISON 41G

DAMERON FIRST CLASS  
**S: EXAR CLASSEN 1422B**  
 EXAR PRINCESS 2006  
 B C C-J C L EMBLAZON 038-287  
**D: HAWTHORNE MISS MORRISON 12W**  
 HFI N. STAR MISS MORRISON 2J

BW	ADJ WW	ADJ YW	SALE WT	CE	BW	WW	YW	MM	TM	API
				1.0	3.5	53	89	16		

25/01/2019  
 2119727  
 PFLC 41G  
 POLLED  
 Black

- Ultra productive
- In her prime with elite genetics
- Daughters at Loyal and George Cattle Co
- Daughter was a many times Champion
- Preg check safe to KT South America 5 months
- Milks and works with a very nice udder



# RED ANGUS

- 26M is athletic, smooth made, wide topped and big hipped!
- A long line of maternal greatness is instilled into this calving ease prospect.
- Martas are one of the most famed cow families from Six Mile Ranch
- His sire, 640H is a son of the highly decorated Red Ter-Ron Diamond Mist 26C cow who needs no introduction in the red angus breed.
- **CONSIGED BY WALSH FARMS**



## Lot 26M RED BURNHAM RIDGE MARTIAL

RED WEBER REFORM 618 20/02/2024  
**S: RED SIX MILE SMACK TALK 640H** 2354048  
 RED TER-RON DIAMOND MIST 26C WFX 26M  
 RED DAMAR TRUMP C512 POLLED  
**D: RED SIX MILE MARTA 836J** Red  
 RED SIX MILE MARTA 928E

BW	WW	YW	SALE WT	CE	BW	WW	YW	MM	TM	API
85	700	1100		2.0	1.1	45	80	23		



SMACK TALK

# SIMMENTAL

- A standout since birth and a favourite of many visitors this summer on pasture tours
- His moderate, very attractive Dam was a sale feature in the 2023 Fallsview sale that we acquired from Earley Livestock
- Kades Snazzy 25K, a daughter of the popular STF Trendy cow, weaned this stud off just shy of 800lbs as a first calf heifer!
- A deep bodied, powerful young herd bull prospect packed full of performance on an excellent set of feet! Bid with confidence here as he will add pounds to his calves and leave some pretty awesome females!
- **CONSIGED BY WALSH FARMS**

## Lot 1M WALSH ASSET 1M

DOUBLE BAR D LIBERATOR 412E 08 February 2024  
**S: ERIXON ASSET 91J** 1463135  
 ERIXON LADY 15D WFX 1M  
 WS EPIC E152 HOMO POLLED  
**D: KADE'S SNAZZY 25K** Red  
 STF TRENDY BT26

BW	WW	YW	SALE WT	CE	BW	WW	YW	MM	TM	API
98	792	1245		11.8	2.8	81.8	135	21.6	62.5	124



ASSET

Return to  
The Elmhirsts  
Grant, Mary & Trudy  
Billy, Juanita, Owen & Katie  
1870 Settlers Line, ON, K0L 2B0



Send to:

**LOT 36L A-H 5 & 10 DOSE PACKS**

ELM-LODGE  
**LEGIT** 36L  
[DLF HYF IEF MSUDF DBF]

**2023  
Royal Winter Fair  
Grand Champion Bull**

Owned with:  
- LV Farms, SK  
- Moeskaer Polled Herefords, Denmark

**50 straws  
of SEMEN  
sells!**

Sire: ELM-LODGE HEAD HONCHO 56H x Dam: GOBLE MISS GORGEOUS 206F  
(ELM-LODGE EMPEROR 67E x UPS JT NEON 7101 1ET) (RVP 100W DUKE 31D x KJ 2403 RECRUIT 966R)